



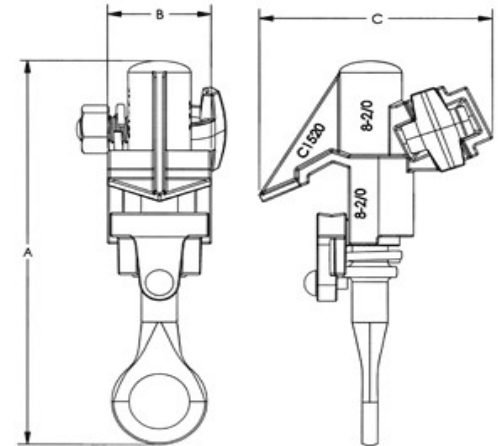
C1520 STYLE HOT LINE CLAMPS

CATALOG NUMBER	RUN DIAMETER	RUN	TAP DIAMETER	TAP	A	B	C	TAP NUT SOCKET SIZE
C1520	0.128-0.414	#8 sol-2/0 str	0.128-0.414	#8 sol-2/0 str	4.50	1.25	2.75	9/16"
C15209	0.128-0.414	#8 sol-2/0 str	0.128-0.414	#8 sol-2/0 str	4.50	1.25	2.75	9/16"
C1520P	0.128-0.414	#8 sol-2/0 str	0.128-0.414	#8 sol-2/0 str	4.50	1.25	2.75	9/16"
C1520P9	0.128-0.414	#8 sol-2/0 str	0.128-0.414	#8 sol-2/0 str	4.50	1.25	2.75	9/16"
C1520A9	0.128-0.414	#8 sol-2/0 str	0.128-0.414	#8 sol-2/0 str	4.50	1.25	2.75	9/16"
C1520AP	0.128-0.414	#8 sol-2/0 str	0.128-0.414	#8 sol-2/0 str	4.50	1.25	2.75	9/16"
C1520AP9	0.128-0.414	#8 sol-2/0 str	0.128-0.414	#8 sol-2/0 str	4.50	1.25	2.75	9/16"

- * P ADDED FOR TIN PLATED
- * 9 ADDED FOR OXIDE INHIBITOR
- * A ADDED FOR ALUMINUM



Family Owned
...And Operated!!



FOR MORE INFORMATION

EMAIL

sales@connectorcastings.com

WEBSITE

www.connectorcastings.com

CALL

731-334-5585

LOCATIONS:

1600 NORTH 22ND STREET, ST. LOUIS, MO 63106
671 INDUSTRIAL PARK DRIVE, SELMER, TN 38375