



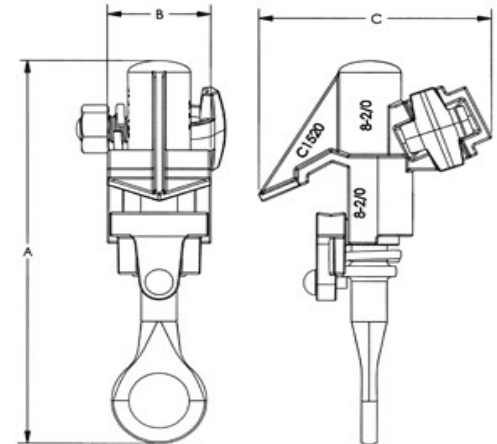
C1530 STYLE HOT LINE CLAMPS

CATALOG NUMBER	RUN DIAMETER	RUN	TAP DIAMETER	TAP	A	B	C	TAP NUT SOCKET SIZE
C1530	0.162-0.745	#6 sol-400 MCM	0.152-0.682	#6 sol-4/0 str	6.50	1.75	2.50	3/4"
C15309	0.162-0.745	#6 sol-400 MCM	0.152-0.682	#6 sol-4/0 str	6.50	1.75	2.50	3/4"
C1530P	0.162-0.745	#6 sol-400 MCM	0.152-0.682	#6 sol-4/0 str	6.50	1.75	2.50	3/4"
C1530P9	0.162-0.745	#6 sol-400 MCM	0.152-0.682	#6 sol-4/0 str	6.50	1.75	2.50	3/4"
C1530A9	0.162-0.745	#6 sol-400 MCM	0.152-0.682	#6 sol-4/0 str	6.50	1.75	2.50	3/4"
C1530AP	0.162-0.745	#6 sol-400 MCM	0.152-0.682	#6 sol-4/0 str	6.50	1.75	2.50	3/4"
C1530AP9	0.162-0.745	#6 sol-400 MCM	0.152-0.682	#6 sol-4/0 str	6.50	1.75	2.50	3/4"

- * P ADDED FOR TIN PLATED
- * 9 ADDED FOR OXIDE INHIBITOR
- * A ADDED FOR ALUMINUM



Family Owned
...And Operated!!



FOR MORE INFORMATION

EMAIL

sales@connectorcastings.com

WEBSITE

www.connectorcastings.com

CALL

731-334-5585

LOCATIONS:

1600 NORTH 22ND STREET, ST. LOUIS, MO 63106
671 INDUSTRIAL PARK DRIVE, SELMER, TN 38375